

# Our Mission is to Power a Thriving Future

We offer solar modules of unsurpassed quality that exceed performance expectations at an affordable price.



High-efficiency monocrystalline silicon PERC cells



Certified PID-free above and beyond the industry standard



Full quality check of every module along the production line



Impact resistant, anti-glare solar glass



Our Declare listing shows commitment to transparent, sustainable practices



Connect with us: [www.itekenergy.com](http://www.itekenergy.com) | [info@itekenergy.com](mailto:info@itekenergy.com)

## Declare.

IT-270-310 Watts  
Itek Energy

Final Assembly: Bellingham, WA, USA  
Life Expectancy: 25-40 YEARS  
End of Life Options: Take Back Program (Bellingham, WA)

We Declare® our product with  
The Living Future Institute



MADE IN AMERICA  
OF U.S. AND IMPORTED PARTS

# itek ENERGY

Building Solar | Powering The Future

# Itek SE Solar Module

## Design & Engineering Data



### GENERAL DATA

Cell Type	<ul style="list-style-type: none"><li>60 high-efficiency monocrystalline p-type cells</li><li>6 x 10 cell matrix</li></ul>	
Solar Glass	<ul style="list-style-type: none"><li>Ultra-clear anti-reflective treatment</li><li>Tempered, with low iron content</li><li>Anti-glare prismatic subsurface texture</li></ul>	
Backsheet	<ul style="list-style-type: none"><li>Multi-layered</li><li>Engineered adhesion for maximum weather protection</li></ul>	
Frame	<ul style="list-style-type: none"><li>High-strength corrosion-resistant anodized aluminum</li><li>Compatible with standard racking, accommodating both top-down clamps and bottom-flange mounting</li></ul>	
Cable	<ul style="list-style-type: none"><li>42" 90°C 12AWG PV wire</li></ul>	
Junction Box	<ul style="list-style-type: none"><li>3 bypass diodes</li><li>1000 VDC MC4 connectors</li></ul>	
Grounding	<ul style="list-style-type: none"><li>Certified for Wiley Electronics WEEB™ grounding clips</li><li>Eight standard grounding locations per module for reduced ground wire length</li></ul>	
Warranty	<ul style="list-style-type: none"><li>25-year power output</li><li>10-year workmanship</li></ul>	

### QUALIFICATIONS

UL Listing	UL 1703
Fire Rating	Type 2
PID Free	500+ hours
ARRA, BAA, and TAA Compliant	

### ELECTRICAL DATA\*

	295 SE	300 SE	305 SE
Maximum Power - P <sub>MAX</sub> (Wp)	295	300	305
Maximum Power Voltage - V <sub>MPP</sub> (V)	32.8	32.9	33.1
Maximum Power Current - I <sub>MPP</sub> (A)	8.9	9.0	9.1
Open Circuit Voltage - V <sub>OC</sub> (V)	39.7	39.8	40.0
Short Circuit Current - I <sub>SC</sub> (A)	9.6	9.7	9.8
Module Efficiency	17.59%	17.89%	18.19%

### MECHANICAL DATA

Dimensions	1001 mm x 1675 mm x 50 mm
Weight	43 lbs

### MAXIMUM RATINGS

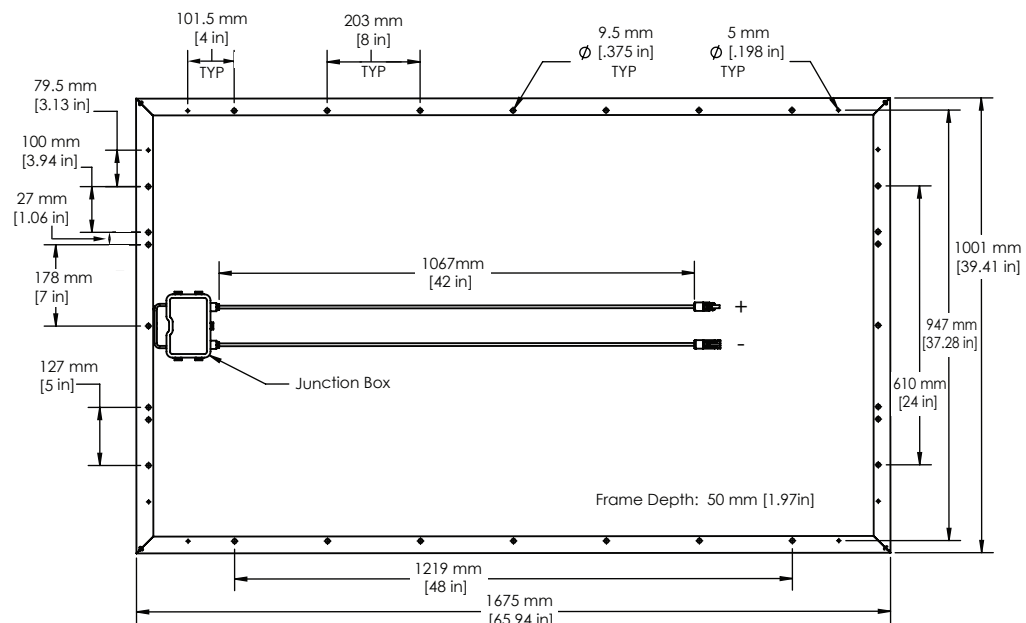
Operational Temperature	-40...+90°C
Maximum System Voltage	1000 VDC
Design Load (UL 1703)	Up to 113 lbs/ft²
Maximum Load (UL 1703)	113/ft²
Maximum Wind Load	113/ft²
Max Series Fuse Rating	15A
Max Reverse Current	15A

### TEMPERATURE RATINGS

Nominal Operating Cell Temperature (NOCT)	45.01°C
Temperature Coefficient of P <sub>MPP</sub>	-0.39%/°C
Temperature Coefficient of V <sub>OC</sub>	-0.29%/°C
Temperature Coefficient of I <sub>SC</sub>	+0.04%/°C
Temperature Coefficient of V <sub>MPP</sub>	-0.38%/°C

\*Electrical characteristics may vary within ±2% of the indicated values at Standard Test Conditions (STC): Irradiance of 1,000W/m², AM 1.5 spectrum, cell temperature at 25°C. For full electrical data on all wattages please see installation manual.

Note: specifications subject to change without notice.



Manufacturing Facilities: 3886 Hammer Drive, Bellingham, WA 98226 | 2746 31st Avenue South, Minneapolis, MN 55406

Sales Offices: WA: (360) 647-9531 | MN: (612) 318-6384 | CA: (360) 393-0178

info@itekenergy.com | www.itekenergy.com

V4.27.17